



Welcome to Country Lane Homes

www.countrylanehomes.com.au

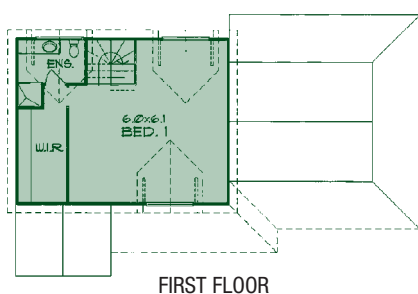


Provincial

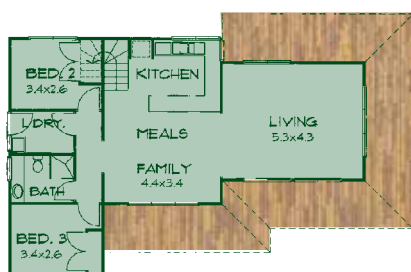
The Provincial Collection, with their high, steep-pitched roof, dormer windows and wide verandahs fit comfortably into the Australian bush setting.

The cathedral ceilings and large full-length windows to three sides of the living areas make the most of the natural light and provide a feeling of spaciousness. These windows can also provide wonderful garden views. The large shaded verandahs are ideal for keeping the interior comfortable during the summer months. The Provincial Collection, like other Country Lane loft homes, is designed to transform the roof space into a usable area.

Provincial - P136

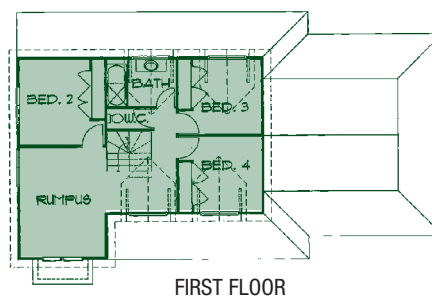


FIRST FLOOR

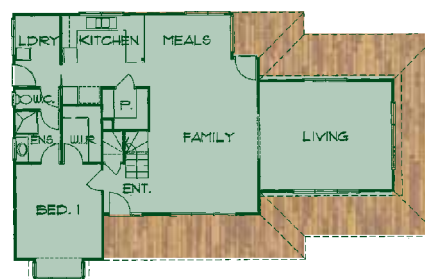


GROUND FLOOR

Provincial - P180



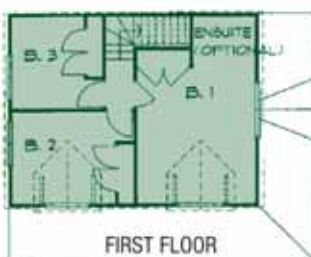
FIRST FLOOR



GROUND FLOOR



Coach House - C102

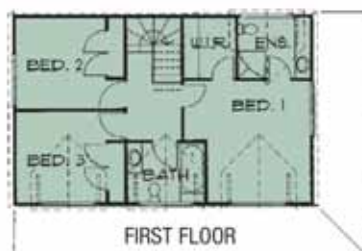


Coach House

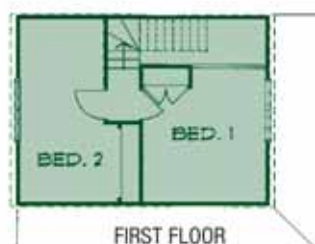
Coach House - C130



Coach House - C125

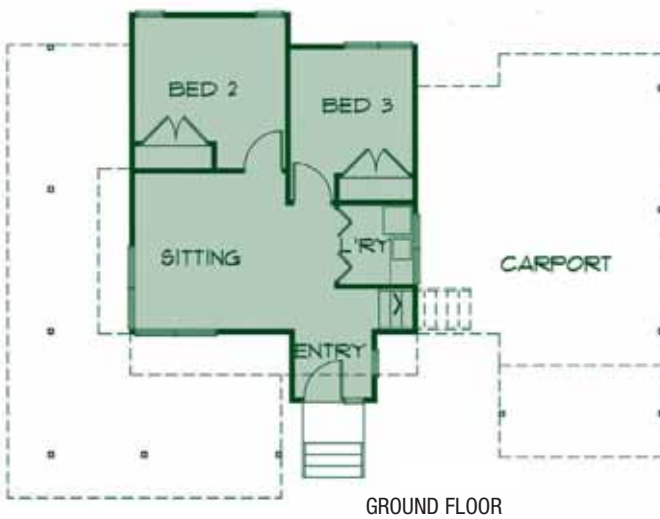


Coach House - C78

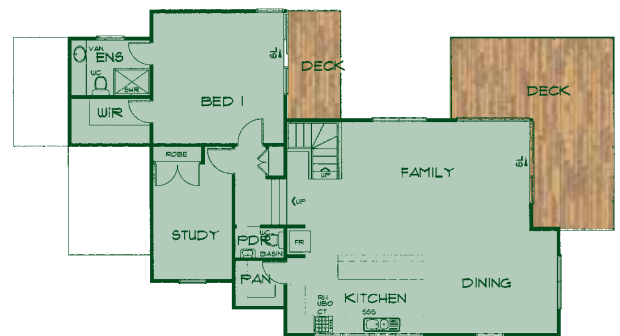
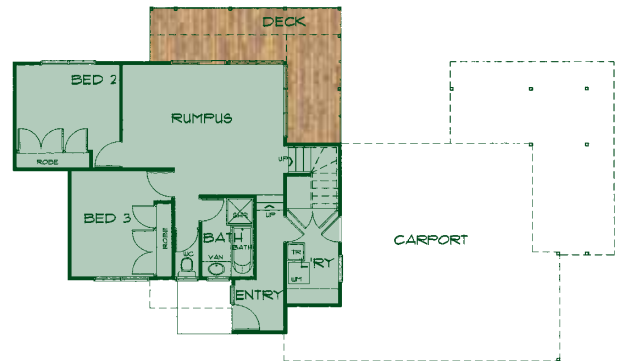




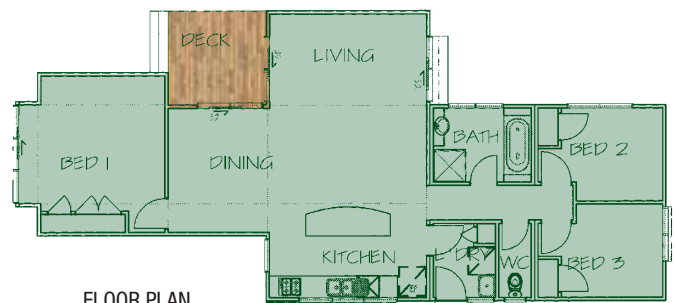
Blairgowrie Tri level



Hampton - H185

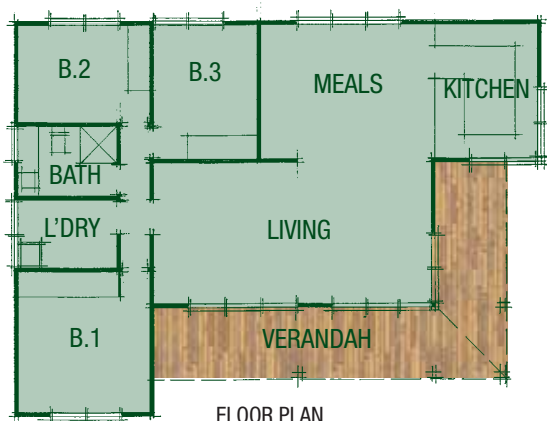


Blairgowrie single storey



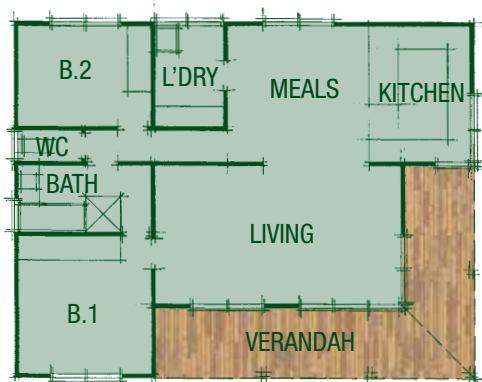


Australian Cottage - A97



FLOOR PLAN

Australian Cottage - A84



FLOOR PLAN



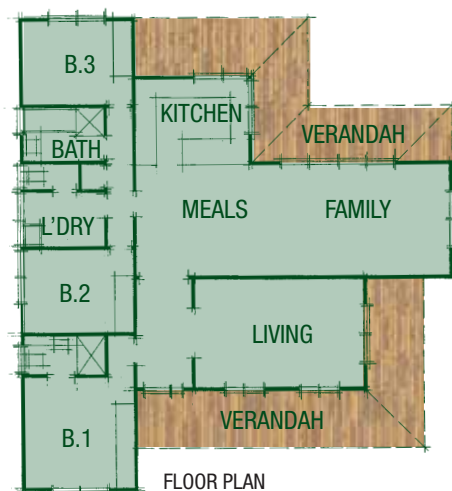
Australian Cottage

The traditional lines of the Australian Cottage have been directly influenced by the Australian blend of Federation and Californian Bungalow style.

The feature dormer windows that suggest this is a large attic-style house actually feature in the timber-lined cathedral ceiling of the living room. This home's intricate lines are further enhanced by box bay windows enlarging bedroom one and the already large family room.

Steep roof lines and flowing verandahs are capped with barge and ridge rolls and finished with turned finials, capping off this truly individual home.

Australian Cottage - A124



FLOOR PLAN



A. B. N. 58 065 950 674

Display Office: 856 Mountain Highway, Bayswater Vic 3153
Postal Address: PO BOX 688, Bayswater Vic 3153
Telephone: (03) 9720 7120

Facsimile: (03) 9720 3378
Website: www.countrylanehomes.com.au
Email: sales@countrylanehomes.com.au